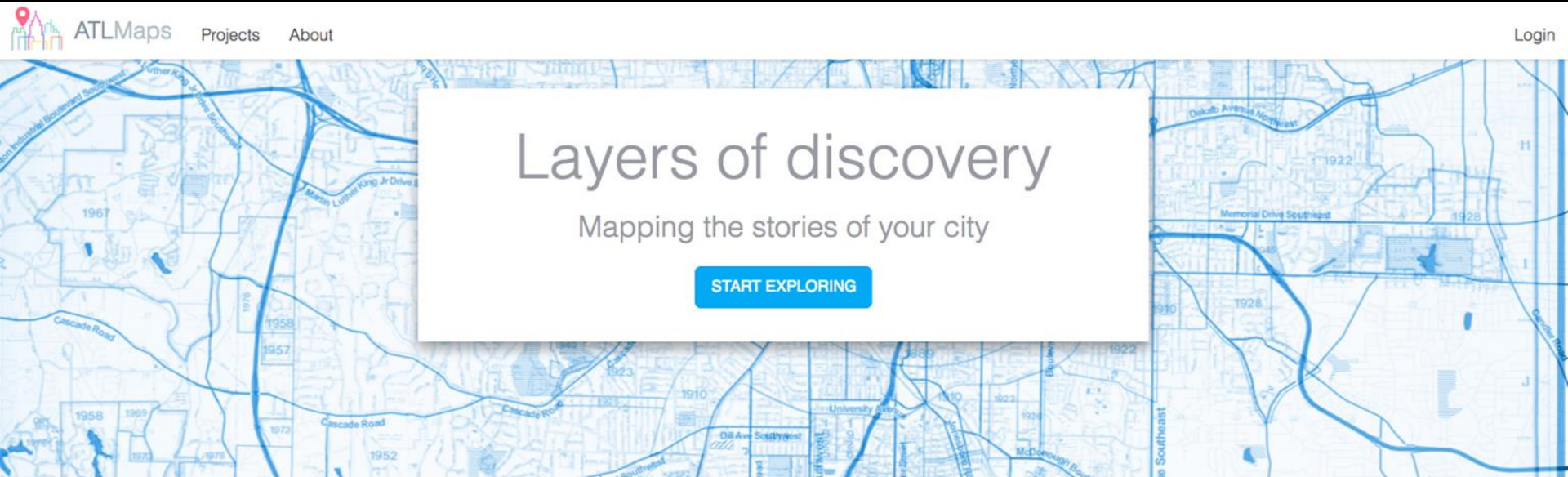


# ATL Maps: Using Archival Resources to Visualize History

Brennan Collins, Center for Excellence in Teaching and Learning, GSU  
Joe Hurley, Data Services and GIS Librarian, GSU



# Deep Maps

“A deep map is a detailed, multimedia depiction of a place and all that exists within it. It is not strictly tangible; it also includes emotion and meaning. A deep map is both a process and a product – a creative space that is visual, open, multi-layered, and ever changing. Where traditional maps serve as statements, deep maps serve as conversations.”

- The Polis Center

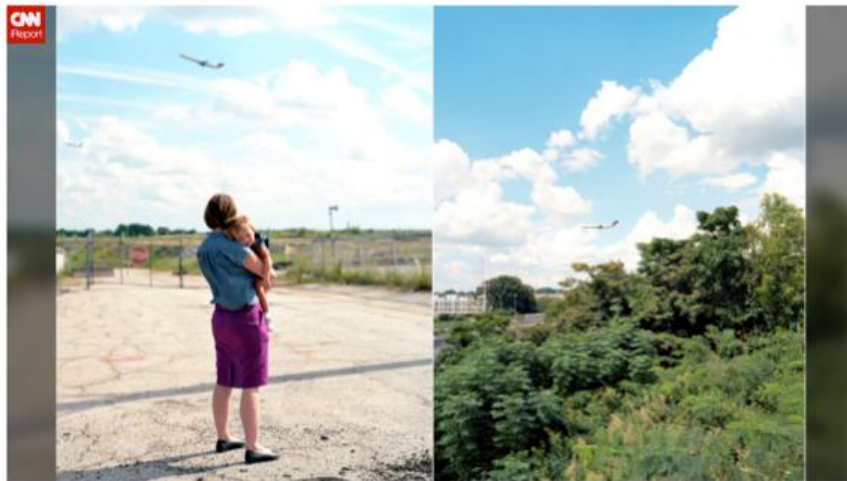
# Deep Maps

“A deep map is a detailed, multimedia depiction of a place and all that exists within it. It is not strictly tangible; it also includes emotion and meaning. A deep map is both a process and a product – a creative space that is visual, open, multi-layered, and ever changing. Where traditional maps serve as statements, deep maps serve as conversations.”

- The Polis Center

# Deep Maps

all

[+1](#) [Tweet](#) [Share](#) [Favorite](#)35,745  
VIEWS24  
COMMENTS368  
SHARES

## About this iReport

• Approved for CNN

Posted September 5, 2013 by  
**HannahATL** | [Follow](#)Location  
East Point, Georgia**Editor's Pick!**  
Team iReport featured this story

Assignment

## A Home by the Airport

By HannahATL | Posted September 5, 2013 | East Point, Georgia

[Share on Facebook](#) 164

**CNN PRODUCER NOTE** Hannah Palmer is a graphic designer in Atlanta. She made a Google mapping project created from her research on places destroyed by Atlanta's airport. She is working on turning her MFA thesis, "I'm From Here," into a book. It combines memoir and investigative journalism to tell the story of her hometown, Mountain View, Georgia, and other erased places surrounding Atlanta's Hartsfield-Jackson International Airport.

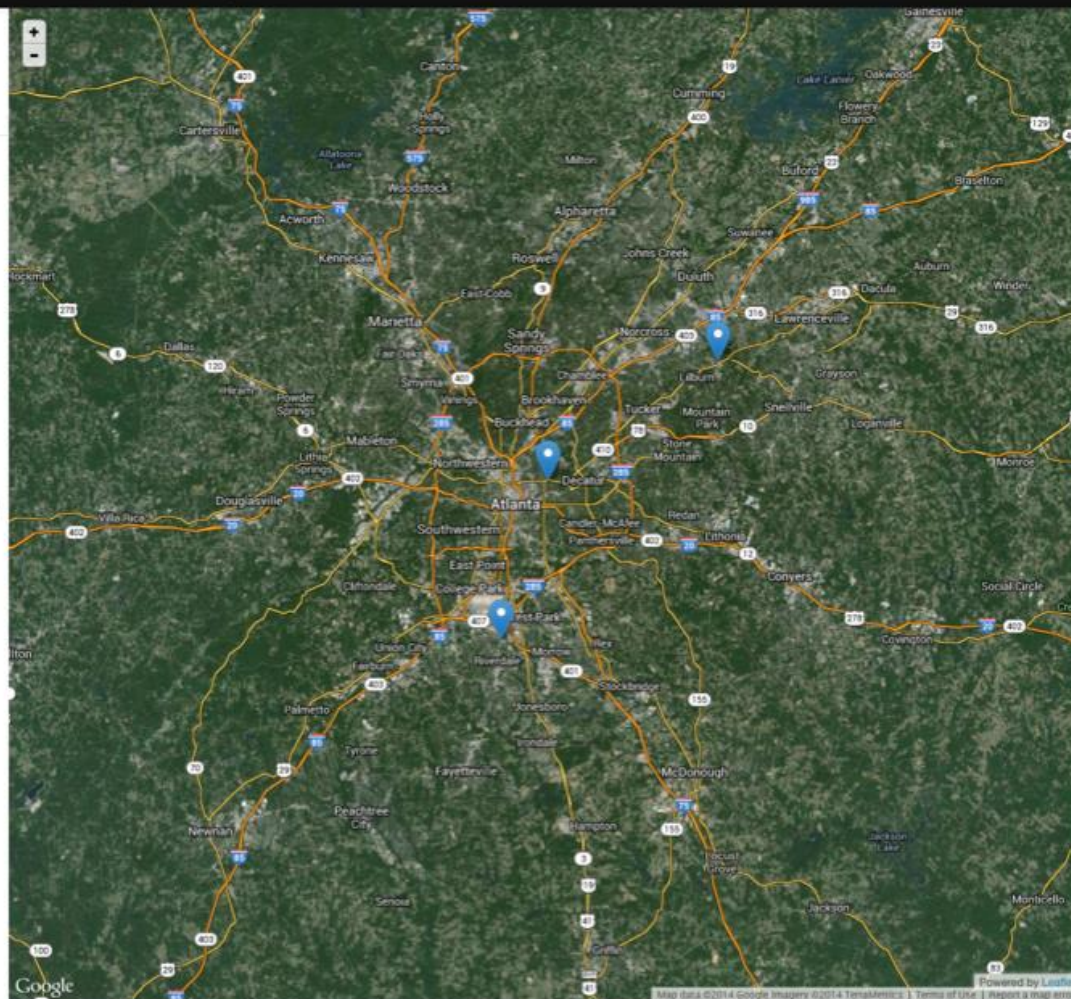
- dsashin, CNN iReport producer

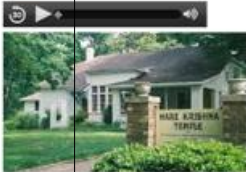


[Map Information](#) ▸[Layer Information](#) ▾

### Atlanta Hare Krishna Temple (ISKCON)

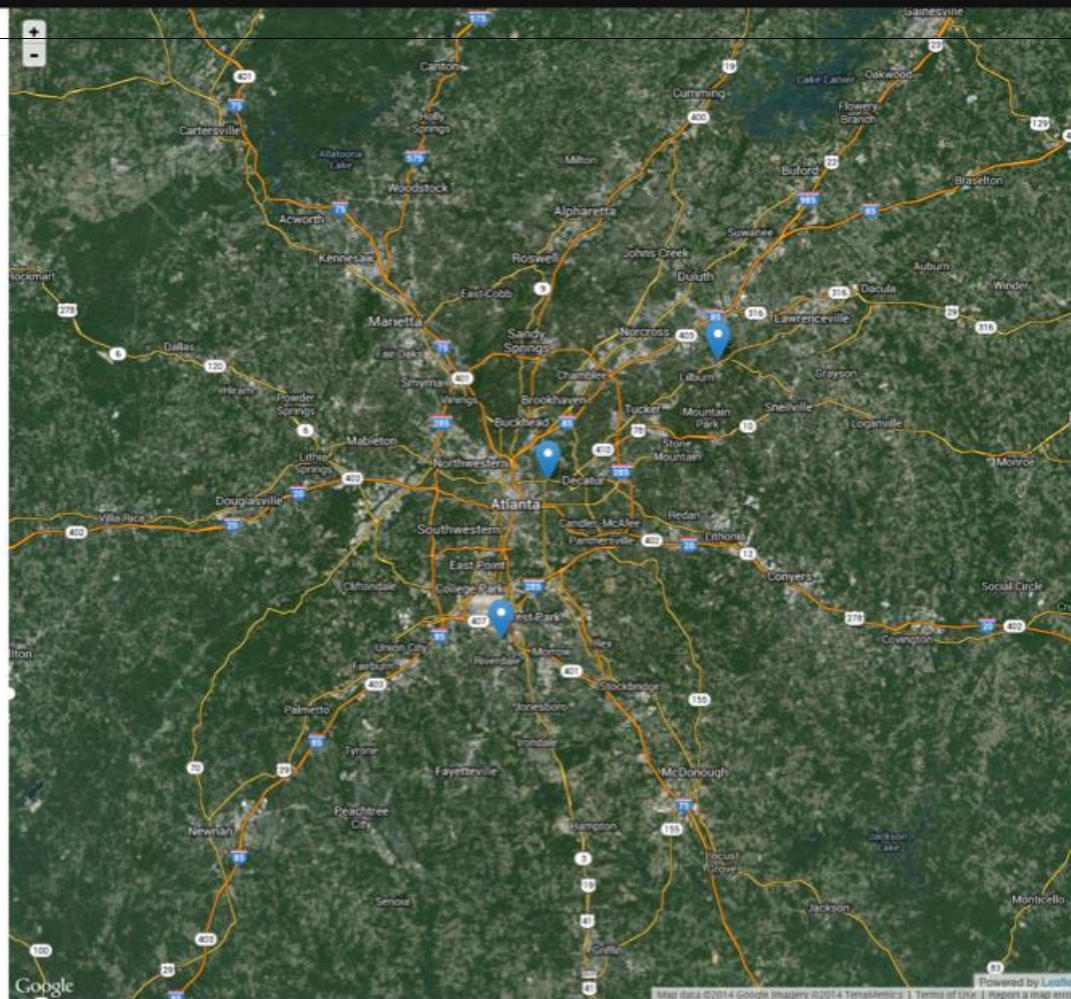
The Atlanta Hare Krishna Temple has been located in the Druid Hills neighborhood of Atlanta since 1976, meeting in a detached home in a residential neighborhood. Arati is a Hindi word referring to the Hindu devotional ceremony where lights, as well as other offerings of fruit, flowers, incense, etc. are waved in front of the enthroned deities. More broadly, arati is also used to refer to the songs that accompany the performance of the ritual, offered in praise of the deities. The officiating priest begins the ceremony with the blowing of a conch shell. Then the priest chants as he makes the offerings. While the devotees sing, the priest makes the appropriate gestures and offerings to the lavishly clad images of the deities. In contemporary settings, the ritual may include pre-recorded chanting played through an audio system. This arati lasted approximately 25 minutes.

[Toggle Layers](#) ▸

[Map Information](#)[Layer Information](#)

### Atlanta Hare Krishna Temple (ISKCON)

The Atlanta Hare Krishna Temple has been located in the Druid Hills neighborhood of Atlanta since 1976, meeting in a detached home in a residential neighborhood. Arati is a Hindi word referring to the Hindu devotional ceremony where lights, as well as other offerings of fruit, flowers, incense, etc. are waved in front of the enthroned deities. More broadly, arati is also used to refer to the songs that accompany the performance of the ritual, offered in praise of the deities. The officiating priest begins the ceremony with the blowing of a conch shell. Then the priest chants as he makes the offerings. While the devotees sing, the priest makes the appropriate gestures and offerings to the lavishly clad images of the deities. In contemporary settings, the ritual may include pre-recorded chanting played through an audio system. This arati lasted approximately 25 minutes.

[Toggle Layers](#)



Map Information &gt;

Layer Information 



**Atlanta Hare Krishna**

The Atlanta Hare Krishna Temple, in the Druid Hills neighborhood of Atlanta, has a detached home in a residential neighborhood. The temple is a Hindu word referring to the Hindu deity, as well as other deities, etc. are waved in front of the temple. More broadly, arati is also used to accompany the performance of the deities. The officiating priest blows a conch shell, which makes the offerings. While the priest makes the appropriate gestures, the images of the deities. In ritual may include pre-recorded audio system. This arati lasts

Toggle Layers ➤



# LIVING WALLS

## Living Walls

[ABOUT](#) [THE ARTISTS](#) [FRIENDS WE LOVE](#) [WALLS](#) [CONTACT](#) [STORE](#) [DONATE](#)

Artist: Andrzej Urbanski, Indigo

559 Flat Shoals Ave SE



Atlanta





# What is ATLmaps?

- Archival Maps
- Multimedia Pinpoints
- Large Datasets

## Focused on Cities

Our mission is to increase the well-being of those who dwell in the world's cities by promoting interdisciplinary research and teaching activities aimed at creating solutions to complex challenges facing urban areas.



### Growth Expected for Tax Allocation Districts, But Redevelopment Concerns Remain, Study Says

Revenues from Atlanta's 10 tax allocation



### Ten Years after Katrina, Still Searching for Home

A decade after Hurricane Katrina decimated swaths of New Orleans, the Lower Ninth Ward—



### University Experts Explain Urban Issues In The Media

Georgia State professors have recently been cited in stories about urban food deserts, how major



EMORY  
LIBRARIES &  
INFORMATION  
TECHNOLOGY

Emory Center for  
Digital Scholarship

[About Us](#)

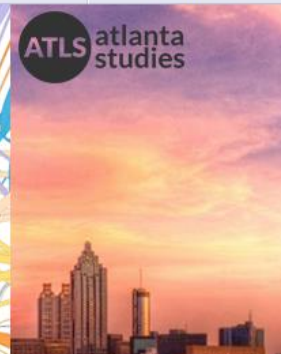
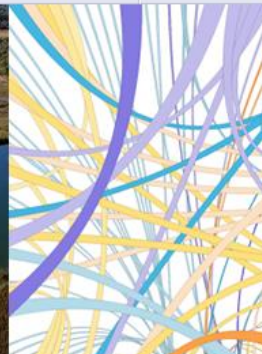
[Publications](#)

[Research](#)

[Pedagogy](#)

[Resources](#)

[Partner with Us](#)



The **Emory Center for Digital Scholarship (ECDS)** in the Robert W. Woodruff Library provides consultation and support for digital teaching, research, preservation, publishing, and exhibiting.





Engage and Inspire Your Audience

A thumbnail for a Story Map titled "Keep the Canyon Grand" by the Grand Canyon Trust. The left side of the thumbnail shows a photograph of the Grand Canyon at sunset. The right side contains the title, a brief description, and a list of bullet points. The text reads: "Keep the Canyon Grand", "Grand Canyon National Park may rank as one of the Seven Natural Wonders of the World, but national park status doesn't give the canyon the complete protection it deserves.", "From every direction, the Grand Canyon is under siege. Uranium mines on federal lands surrounding the park leave the contamination of precious seeps and springs to chance, while proposed developments—like a tramway that could ferry 10,000 people a day to the bottom of the canyon—risk desecrating native people's sacred sites. Even casual park-goers leave their mark, stressing the canyon's finite water resources."

Story Map of the Month

[Keep the Canyon Grand](#)

Grand Canyon Trust



# StoryMap JS

Maps that tell stories.

[Make a storymap now](#)

Map Overview [Back To Beginning](#)



Mean US\_Mean\_Center\_of\_Population\_1790-2010

**US MANIFEST DESTINY**  
MEAN CENTER OF UNITED STATES POPULATION

## WorldMap

Sign in | Create Map | View Map | Help ▾

Create a Map

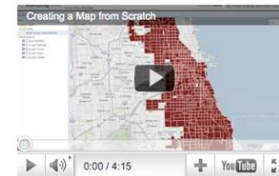
View a Map

About



Giza Map

Build your own mapping portal and publish it to the world or to just a few collaborators. WorldMap is open source software.



[Watch the WorldMap Quick Start video](#)

WorldMap is being developed by the [Center for Geographic Analysis](#) at [Harvard University](#).

[Need Help?](#) [Contact Us](#) [Source Code](#) [Report Copyright Infringement](#) Copyright 2015 © The President and Fellows of Harvard College

# Hello, Earth

LET'S GO EXPLORE.

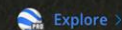
## Google Earth

Go anywhere, on any device for free.



## Google Earth Pro

Make business decisions with advanced tools.





## David Rumsey Map Collection

CARTOGRAPHY ASSOCIATES

### THE COLLECTION

Share this Page

[Georeferencer: Help Add Location to Maps ▸](#)

Welcome to the David Rumsey Map Collection Database and Blog. The Map Database has many viewers and the Blog has numerous categories.

The historical map collection has over 68,000 maps and images online. The collection includes rare 16th through 21st century maps of America, North America, South America, Europe, Asia, Africa, Pacific and the World.

Popular collection categories are celestial, antique atlas, globe, school geography, maritime chart, state, county, city, pocket, wall & case, children's, and manuscript maps. Search examples: Pictorial maps, United States maps, Geology maps, California map, Afghanistan map, America map, New York City map, Chicago map, and U.S. Civil War maps. Browse map categories: What, Where, Who, When. The collection is used to study history, art, genealogy, explorations, and family history. [Learn more ▸](#)

[Watch 360 degree QTVR of the Collection Space ▸](#)  
[Browse Lists of the Collection's many Atlases ▸](#)

[View this Map in LUNA Browser ▸](#)[Launch Collection in LUNA Browser ▸](#)

View Maps Added after Additions of April 4, 2015

Prev

Next ▸



View: Rocky Mountain Falls, West of Chief Mountain Lake; U.S. Northern Boundary Commission; Campbell, Archibald; Twining, W.J.; 1878; Exploration Book

### FEATURED MAPS

Over 2,000 Pictorial Maps in Online Collection



Over 2,000 Pictorial maps and related images have been added to the David Rumsey Map Collection in the form of separate maps, pocket maps, case maps, atlases, manuscript maps, and wall maps. Pictorial maps are generally described as maps that employ various kinds of illustrations, images, and text that enhance the cartographic message. While they seem to have peaked in popularity in the 1920 to 1940 period, they have [Read full blog post ▸](#)

### BLOG HIGHLIGHTS

David Rumsey Map Center Opens at Stanford April 17, 2016



The David Rumsey Map Center opens April 19, 2016 at Stanford. Rumsey has donated both his physical and digital map collections to Stanford where they will be housed in the new Rumsey Map Center facility in the Bing Wing of the Green library. The online library at [www.davidrumsey.com](http://www.davidrumsey.com) will continue to operate in parallel to and integrated with the resources available at the Stanford Rumsey Map Center. See this article about the opening in the Stanford Report online, and another [Read full blog post ▸](#)

Search the Site

Go

### Blog

[Email Feed](#) [RSS \(7\)](#)

- All Categories
- Recent Additions
- News
- Featured Maps
- Related Collections
- Videos

### Quicklinks

The collection may be viewed with the following applications:

- LUNA Browser [↗](#)
- Atlases **NEW!**
- Georeferencer **NEW!** [↗](#)
- MapRank Search [↗](#)
- Google Earth [↗](#)
- Google Maps [↗](#)
- Second Life [↗](#)
- 3D GIS
- Insight Java Client [↗](#)
- Ticker [↗](#)

### Reproductions



Buy prints through LUNA Browser. [Learn more ▸](#)

### Networking

- [Follow us on Twitter](#)
- [Like us on Facebook](#)

Find our maps and others on





# Why ATLmaps?

# Why ATLmaps?

- Usability

# Why ATLmaps?

- Usability
- Local

# Why ATLmaps?

- Usability
- Local
- Layers



# Why ATLmaps?

- Usability
- Local
- Layers
- Archives

# Libraries and Maps

- Libraries and unique maps
- Georeferencing maps
- Organizing and delivering digital maps

☐ Show Only Public Domain

118 results found | Filtering on: **Parent:** Atlas of the Brooklyn borough of the City of New York: originally Kings Co. complete in three volumes ... based upon official maps and plans ...

Sort by: [Title](#) [Date created](#) [Date digitized](#) [Sequence](#)

TOPIC

NAME

COLLECTION

PLACE

GENRE

PUBLISHER

DIVISION

TYPE

DATE RANGE

Start to End



Double Page Plate No. 1: [Bou...



Double Page Plate No. 11: [Bo...



Double Page Plate No. 4: [Bou...



Double Page Plate No. 33: [Ja...



Double Page Plate No. 18: [Bo...



Double Page Plate No. 30: [Bo...



Double Page Plate No. 7: [Bou...



Double Page Plate No. 9: [Bou...



Double Page Plate No. 19: [Bo...



Double Page Plate No. 27: [Bo...



Atlas of the Brooklyn borough...



Index to Streets. Aberdeen St...



[Index to Streets. Kanu Place...



Index Map to Volume One. Atla...



Double Page Plate No. 1: [Bou...



Double Page Plate No. 2: [Bou...



Double Page Plate No. 3: [Bou...



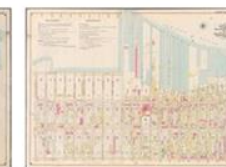
Double Page Plate No. 4: [Bou...



Double Page Plate No. 5: [Bou...



Double Page Plate No. 6: [Bou...



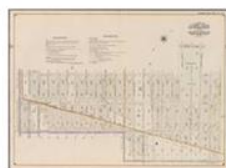
Double Page Plate No. 7: [Bou...



Double Page Plate No. 8: [Bou...



Double Page Plate No. 9: [Bou...



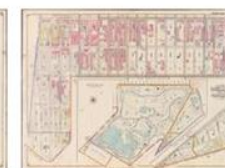
Double Page Plate No. 10: [Bo...



Double Page Plate No. 11: [Bo...



Double Page Plate No. 12: [Bo...



Double Page Plate No. 13: [Bo...



Double Page Plate No. 14: [Bo...

Feedback



## Sheet No. 2

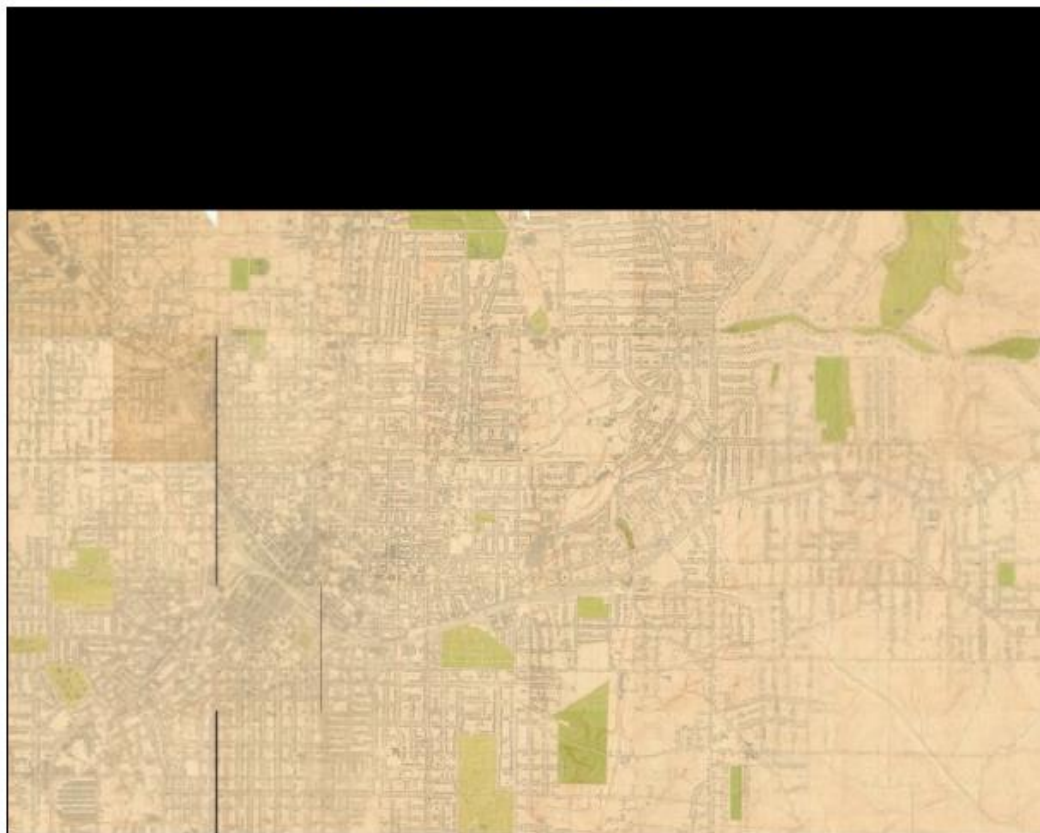
Tip: drag edges of image to resize





## 1928 Atlanta City Map

Posted November 27, 2012 by [DiSC Staff](#) & filed under [Maps](#).



Search for:

Search

### RECENT POSTS

[Atlanta 1927-30 Topographic Maps with Open Street Map Overlay](#)

[Trackless Trolley Map and Bus Lines circa 1950](#)

[1906 Atlanta City Map](#)

[1928 Atlanta City Map](#)

[1878 Overview](#)

### BLOGROLL

[Atlanta Time Machine](#)

[Georgia State University Historical Maps](#)

[MARBL's Historic Map Collection](#)

[OpenSeadragon](#)

### RECENT COMMENTS

### ARCHIVES

[April 2013](#)

[November 2012](#)

[October 2012](#)

### CATEGORIES

[Maps](#)



## Search or Browse the Collection

Search

Browse



Planning Atlanta - A New City in the Making, 1930s - 1990s

### About the Planning Atlanta Collection

*Crowded, congested cities could be on their way out. In their place we could have a new type of city in the future – wide, green, open, and well-planned. Its people would be on wheels and wings, moving swiftly and surely from suburb to suburb, from rim to core and back again. ...Metropolitan Atlanta, hub of Piedmont America, is a prime example of the New City in the making.*

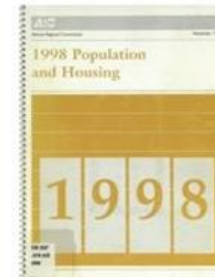
-Up Ahead: A Regional Land Use Plan for Metropolitan Atlanta, Metropolitan Planning Commission, 1952.



City Planning Maps



City Planning Publications



City Population and Housing Data



Photographs



Oral Histories



1949 Aerial Mosaic & Photographs

Search

[Advanced Search](#)



50 of 793



[Home](#) >> [Planning Atlanta - A New City in the Making, 1930s-1990s City Planning Maps](#) >> **Map of Atlanta: Land Use 1952**

[<<](#) [Back to results page](#)

## Map of Atlanta: Land Use 1952



Share



Google Maps



Google Earth



GeoTiff



Download

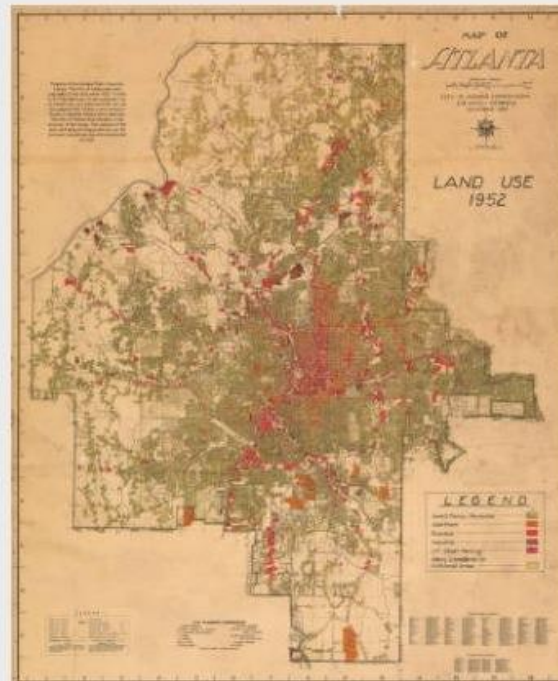


Print



Reference URL

[Usage Policies and Ordering](#)

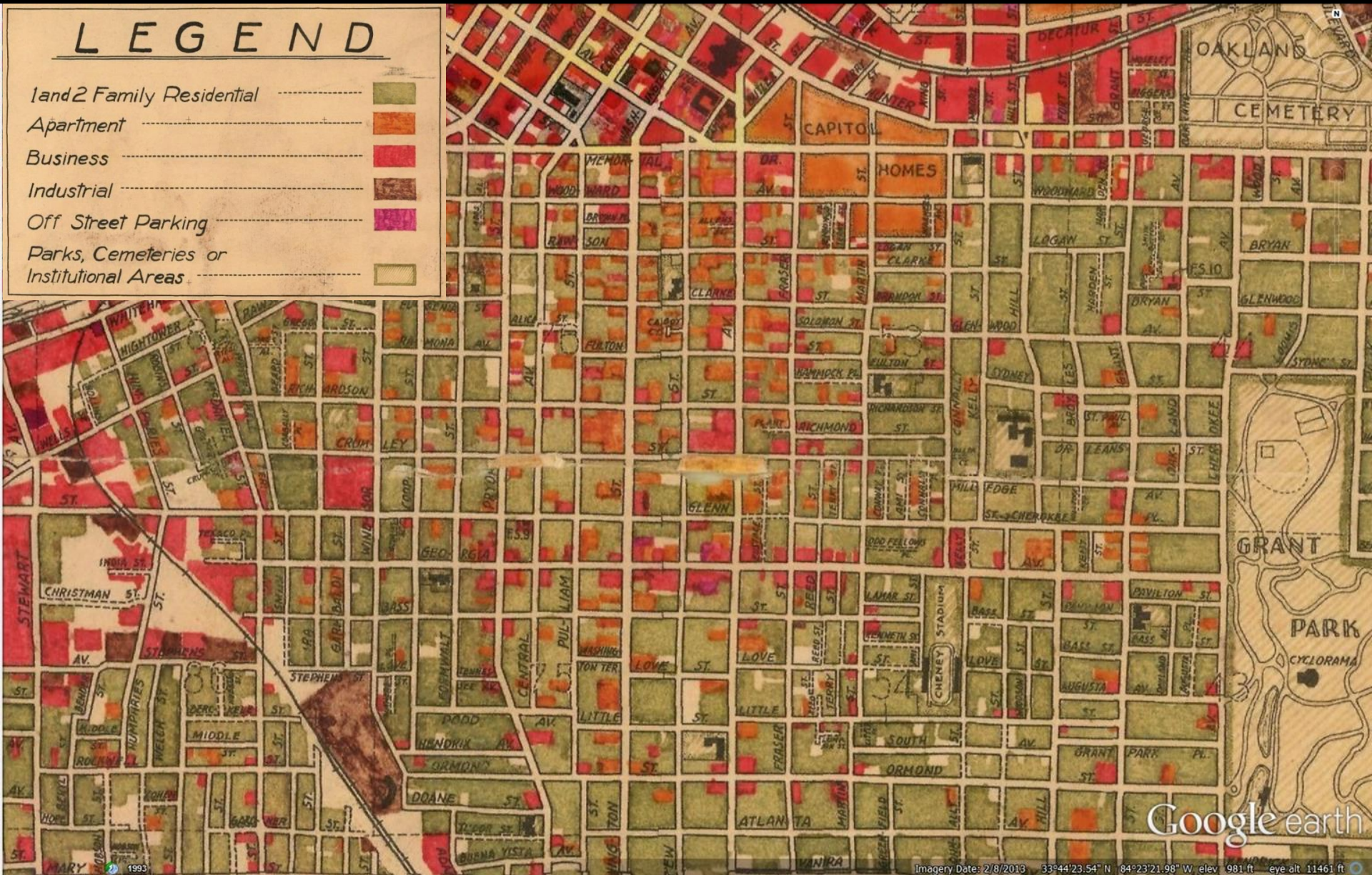




# 1952 Atlanta Land Use Map

## LEGEND

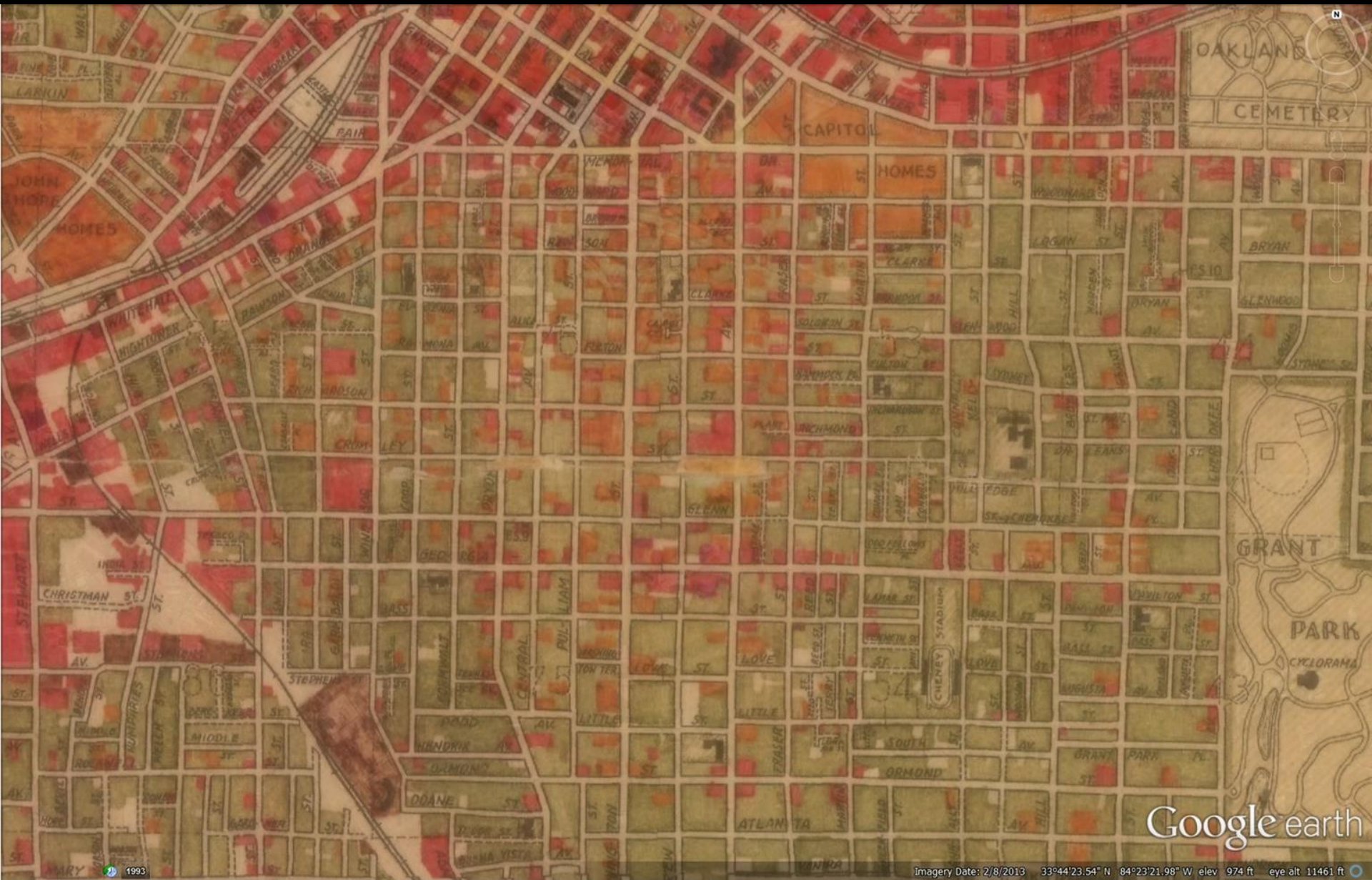
- 1 and 2 Family Residential
- Apartment
- Business
- Industrial
- Off Street Parking
- Parks, Cemeteries or Institutional Areas



Google earth

Imagery Date: 2/8/2013 33°44'23.54" N 84°23'21.98" W elev 981 ft eye alt 11461 ft

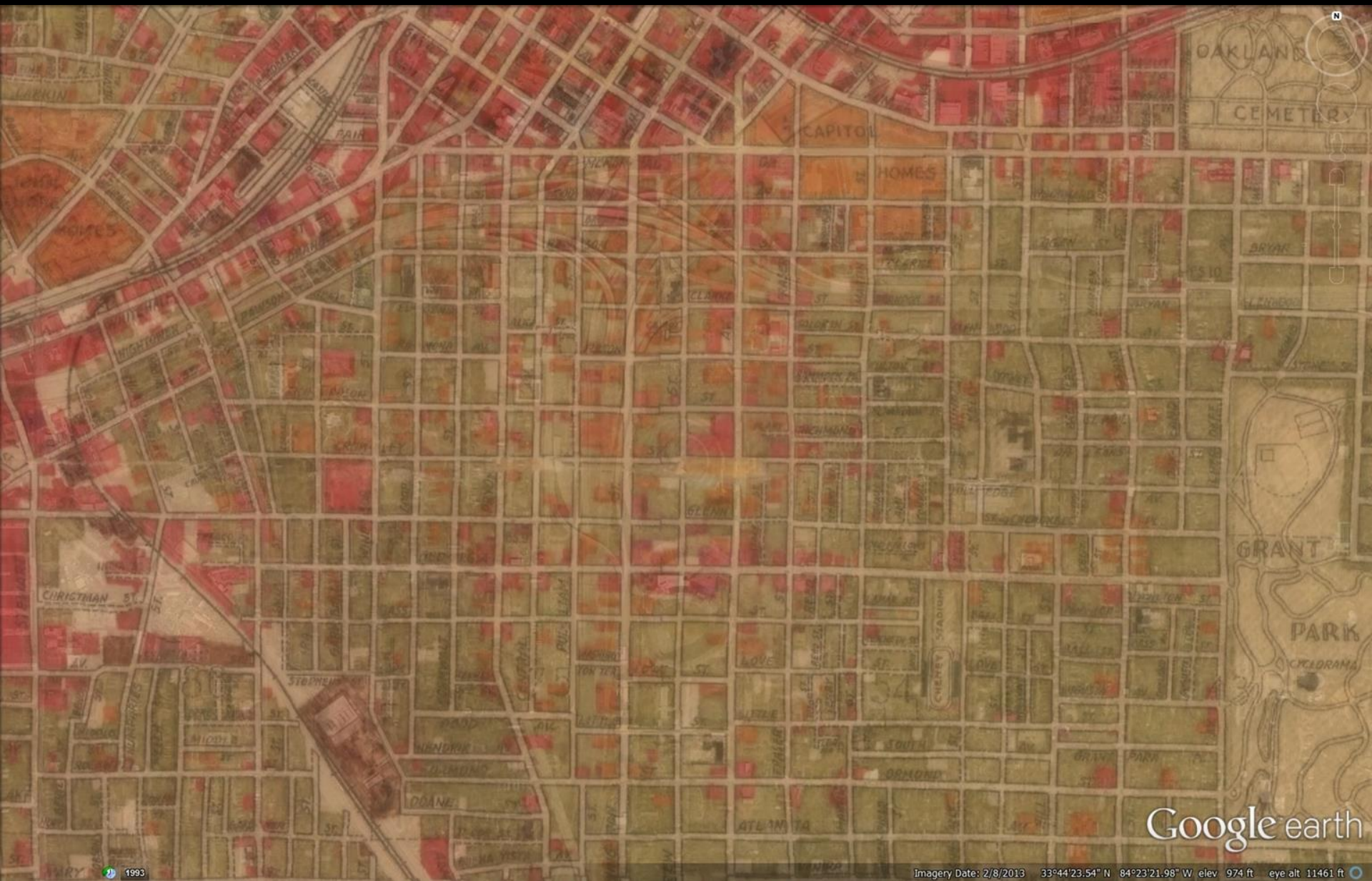




Google earth

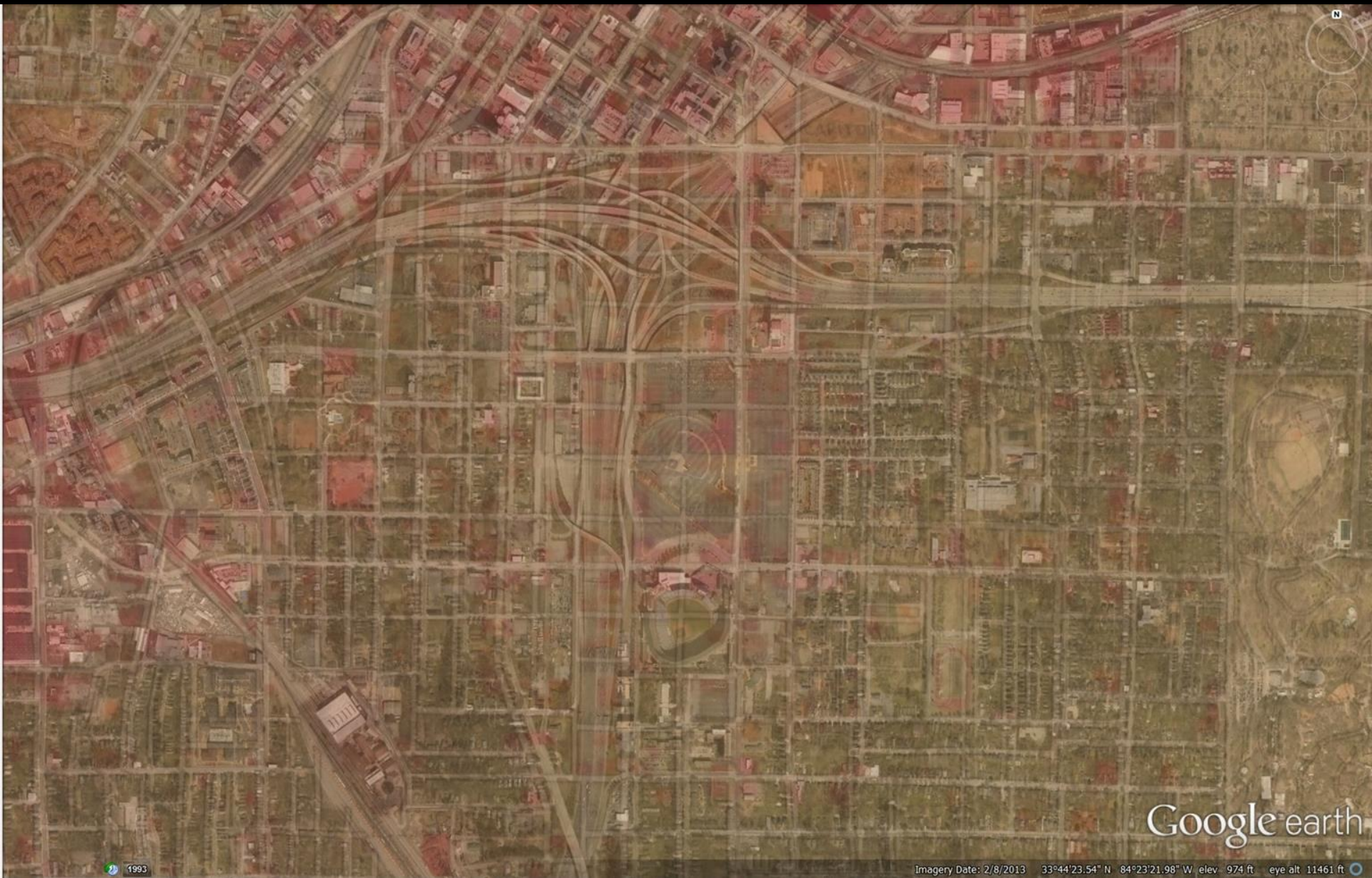
Imagery Date: 2/8/2013 33°44'23.54" N 84°23'21.98" W elev 974 ft eye alt 11461 ft





Google earth





Google earth

1993

Imagery Date: 2/8/2013 33°44'23.54" N 84°23'21.98" W elev. 974 ft eye alt 11461 ft



Search

[Advanced Search](#)



50 of 793



[Home](#) >> [Planning Atlanta - A New City in the Making, 1930s-1990s City Planning Maps](#) >> **Map of Atlanta: Land Use 1952**

[<<](#) [Back to results page](#)

## Map of Atlanta: Land Use 1952



Share



Google Maps



Google Earth



GeoTiff



Download

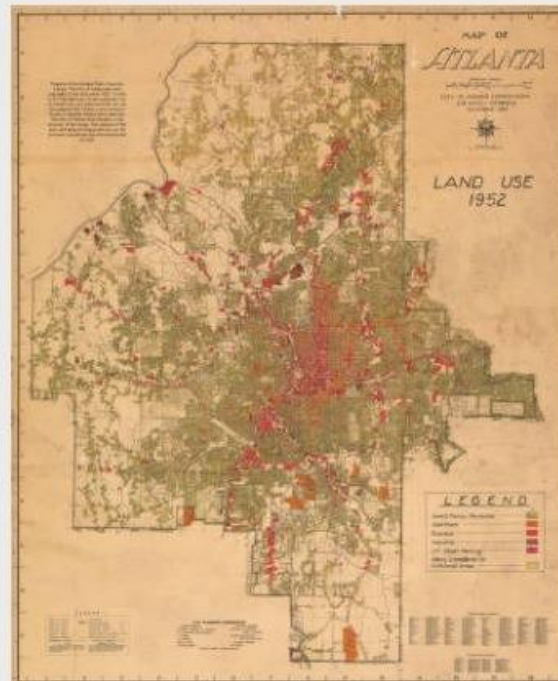


Print



Reference URL

[Usage Policies and Ordering](#)





## OpenGeo Suite

The Best For Open Source Software That Solves Enterprise Geospatial Challenges.



OpenGeo Suite is a complete geospatial platform for managing data and building maps and applications across web browsers, desktops, and mobile devices. Built on leading open source geospatial software, OpenGeo Suite has a robust and flexible architecture that enables organizations to reliably manage and publish geospatial data.

- Manage and store data reliably with [PostGIS](#)
- Publish maps and data from a variety of formats and sources with [GeoServer](#)
- Build flexible user interfaces and custom workflows in the browser with [OpenLayers](#)
- Analyze and publish geospatial data on the desktop with [QGIS](#)





**C. A. Dollar Shoe Shop, 116 Pryor Street SW, Atlanta, Georgia, circa 1927.**

Download

Print

Reference URL

Share

[Usage Policies and Ordering](#)



# Historic Atlanta Guidebook Images

## Atlanta Chamber of Commerce

Download

Print

Reference URL

Share

[Usage Policies and Ordering](#)



# Lane Brothers Photographs

## 20th Century Fox ("Wilson" premiere)

Download

Print

Reference URL

Share

[Usage Policies and Ordering](#)





# Layers of discovery

Mapping the stories of your city

START EXPLORING

## Featured Projects



### Religious Sounds

The Religious Sounds Map project documents the sounds associated with various religious communities, events, and individual practices in metropolitan Atlanta. Students, supervised by Dr. Kathryn McClymond at GSU, made the digital sound recordings.

Created by: Brennan Collins



### ATLas

Using the memories of eight women from the 1970s Atlanta art scene who continue to shape arts in the city today, Julia Brock (UWG), Teresa Bramlette Reeves (KSU), and Kirstie Tepper (GSU) mapped the places important to the arts world forty years ago.

Created by: Julia Brock



### I'm From Here

In her memoir, Hannah Palmer explores how the growing Atlanta airport erased her childhood homes. This project combines pinpoints with text from her memoir with a 1968 map of the airport.



### Stadiumville

The Stadiumville project proposes to document the history and memory of the events and people who have shaped the neighborhoods in what is now Turner Field and the redevelopment of the area as the Atlanta Braves leave for the suburbs.