

## Start Your Joint ALA-Chapter Membership

Join at [www.ala.org/groups/joint-membership-program](http://www.ala.org/groups/joint-membership-program)  
or call 800-545-2433, option 5.

The following Chapters (state library associations) allow students to join them and ALA for one low price of \$38, from now through August 31, 2016.

### Participating State Library Associations (Chapters):

- Alabama
- Alaska
- Arizona
- Arkansas
- California
- Connecticut
- Delaware
- District of Columbia
- Georgia
- Hawaii
- Indiana
- Kansas
- Kentucky
- Louisiana
- Maine
- Maryland
- Massachusetts
- Michigan
- Minnesota
- Mississippi
- Missouri
- Montana
- Nevada
- New Jersey
- New York
- North Carolina
- Ohio
- Oklahoma
- Oregon
- Pennsylvania
- Rhode Island
- South Carolina
- South Dakota
- Tennessee
- Texas
- Washington
- Wisconsin

Save time and postage; join two  
great associations for one low price.

Join online at

[www.ala.org/groups/joint-membership-program](http://www.ala.org/groups/joint-membership-program)

MD-0915

# Joint Student Members are full members of both associations.

### Membership benefits include:

#### From **ALA**

- 6 issues of *American Libraries*, the magazine of the association (a \$70 subscription included in dues)
- Weekly delivery via email of *ALDirect*, the industry leader for news affecting the future of the profession
- *Student ALDirect*, the e-newsletter specifically focusing on news and information to students, delivered monthly throughout the academic year
- Access to ALA scholarships, grants, awards and travel opportunities
- Substantial discounts on ALA and Divisional Conferences
- 10% members-only discounts on ALA publications and graphics
- Access to auto and home insurance through ALA affinity providers

#### From **GLA**

- Free subscription to the *Georgia Library Quarterly*; ongoing professional development opportunities; student scholarships, fellowships, and awards; discounted registration for the GLA Annual Conference

<http://gla.georgialibraries.org>

**ALA** | American  
MEMBERSHIP | Library  
Association

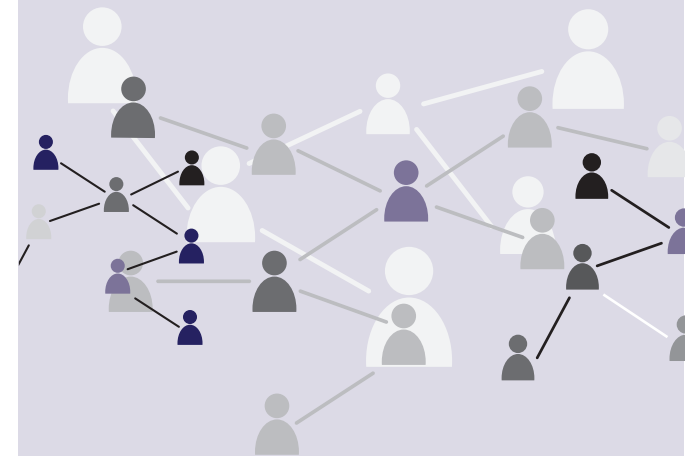
50 E. Huron St | Chicago, IL. 60611

[www.ala.org/membership](http://www.ala.org/membership)

SPECIAL MEMBERSHIP OFFER FROM  
**ALA** and **Georgia Library Association**

## Joint Membership for Library and Information Science Students

**\$38.00**  
PER YEAR  
over a \$50  
value!



Join both your state and national library  
associations and get connected to your future.

Now you can join online at  
[www.ala.org/groups/joint-membership-program](http://www.ala.org/groups/joint-membership-program)

# About ALA

The American Library Association (ALA) works for students by advocating for increased library funding and ongoing development of the profession. Through our accreditation program, ALA ensures that the training you receive will prepare you for your chosen career.

ALA will help you with resources to find your first job and to remain competitive. ALA student members have access to the best network of career and professional development resources for library workers.

You need more than classwork to be fully prepared for your career. Joining ALA divisions and round tables is an excellent way to build experience in your specialty by meeting and working with longtime professionals. Student members can take advantage of ALA resources like our résumé review services, job placement events, and car and home insurance.

To learn more about ALA and our divisions or round tables, visit [www.ala.org](http://www.ala.org) or call 1-800-645-2433, ext 5.



# About GLA

Student members of the Georgia Library Association have a unique opportunity to broaden their experience outside of the classroom and connect with the issues that affect our profession. Our membership is thousands of library professionals dedicated to the future of Georgia's libraries. Your membership is access to the networking opportunities that will benefit your work life and connect you with your future.

Join GLA and learn about librarianship and information management in "real world" context. Find a mentor and be exposed to a wide variety of libraries and library issues. Student members are called upon not only to learn, but to lead. You have hundreds of opportunities through committees and work groups to build your résumé while serving the needs of the profession. Your work life is accelerated through your membership in GLA.

## GLA Interest Groups

Academic Library Division  
Georgia Library Trustees, Friends & Advocates Association  
New Members Round Table  
Paraprofessional Division  
Public Library Division  
Teen Services in Public Libraries Section  
Children's Services in Public Libraries Section  
Correctional Library Service Section  
Georgia Association of School Librarians  
Special Libraries/Information Services Division  
Collection Development  
Distance Education  
Government Documents  
Library Services for Persons with Disabilities  
Information Technology  
Interlibrary Cooperation  
Professional & Continuing Education  
Reference Services  
Technical Services  
Technical College Libraries  
Circulation & Access Services  
Assessment

## Joint Student Membership Application

Joint Student Members are eligible to join ALA divisions. If you have special interests, consider joining a division. These are special student rates:

### Divisional Dues

American Association of School Librarians (AASL)	\$35
Assoc. of College and Research Libraries (ACRL)	\$40
Assoc. for Library Collections & Technical Services (ALCTS)	\$15
Assoc. for Library Service to Children (ALSC)	\$20
Assoc. of Specialized and Coop. Library Agencies (ASCLA)	\$20
Library Administration and Management Assoc. (LAMA)	\$15
Library and Information Technology Assoc. (LITA)	\$25
Public Library Association (PLA)	\$31
Reference and User Services Association (RUSA)	\$25
United for Libraries (UL)	\$20
Young Adult Library Services Association (YALSA)	\$25

### Round Table Dues

Joint Student Members are eligible to join any of the ALA Round Tables. The following have special rates for student membership. Please visit [www.ala.org/groups/rts](http://www.ala.org/groups/rts) for a complete list.

Ethnic and Multicultural Information Exchange (EMIERT)	\$10
Federal and Armed Forces Librarians (FAFLRT)	FREE
Gaming (GAMERT)	\$10
Gay, Lesbian, Bisexual and Transgendered (GLBTRT)	\$5
Government Documents (GODORT)	\$10
Intellectual Freedom (IFRT)	\$5
International Relations (IRRT)	\$5
Library History (LHRT)	\$5
Library Research (LRRT)	\$15
Doctoral students	FREE
Map and Geospatial Information (MAGIRT)	\$10
New Members (10-year limit) (NMRT)	\$10
Social Responsibilities (SRRT)	FREE
Sustainability (SustainRT)	\$10
Video (VRT)	FREE

Save time and postage; join two great associations for one low price.

Join online at

[www.ala.org/groups/joint-membership-program](http://www.ala.org/groups/joint-membership-program)